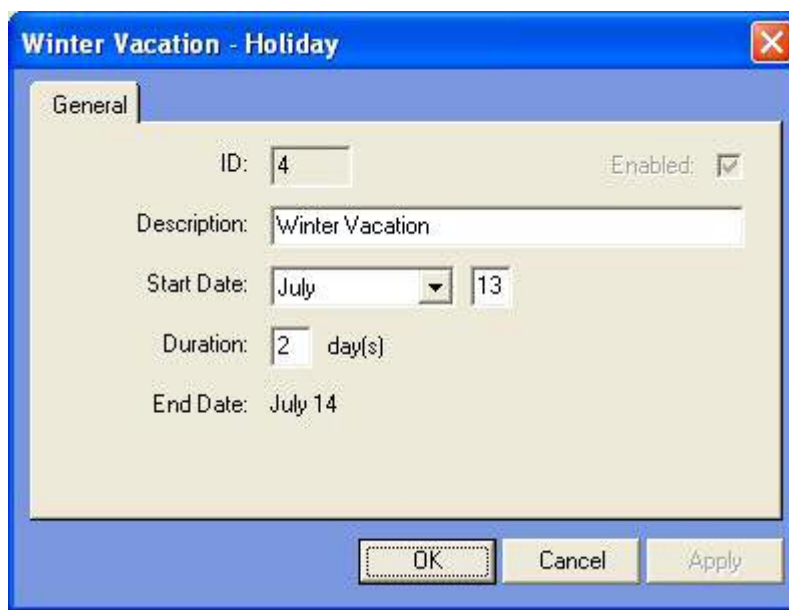


Modifying an existing holiday

Once a holiday has been created you can modify when it occurs. To modify a holiday complete the following steps:

- Select a Holiday in the Holidays list.
- Click the *Modify a Holiday* option in the Holiday Tasks pane.

Building Monitor displays the Holiday window.



The screenshot shows a dialog box titled "Winter Vacation - Holiday". It has a "General" tab. The fields are: ID: 4, Enabled: , Description: Winter Vacation, Start Date: July 13, Duration: 2 day(s), End Date: July 14. At the bottom are buttons for OK, Cancel, and Apply.

- Select the start month and day for the holiday.
- Enter the number of days for the holiday.
- To confirm your selections click the OK or Apply buttons.

Deleting a holiday

Once a holiday has been created there may be times when you want to delete that holiday. To delete a holiday complete the following steps:

- Select a Holiday in the Holidays list.
- Click the *Delete a Holiday* option in the Holiday Tasks pane.

Building Monitor deletes the holiday from the Holidays list.

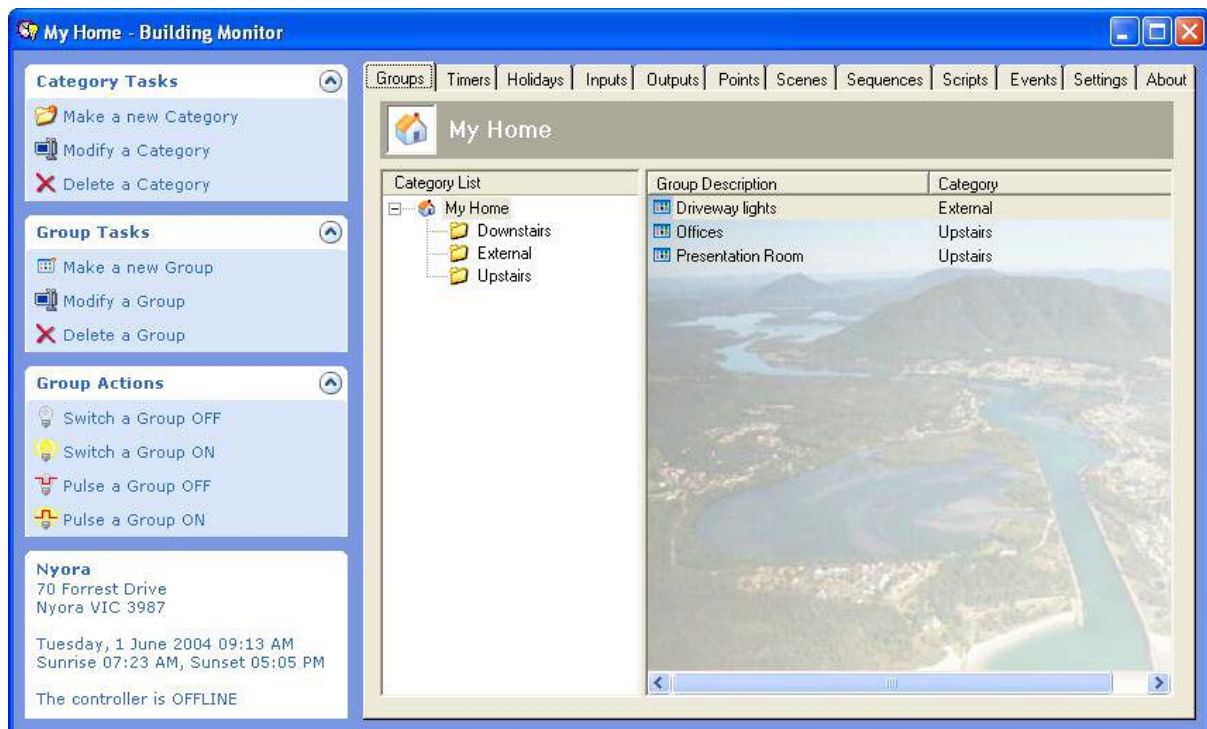
Manual Control

Building Monitor provides manual control of Groups, Outputs and Points. Manual control can be achieved whenever the controller is online.

Manually controlling a group

To manually control a group complete the following steps:

- Select the Groups tab
Building Monitor displays the list of groups for the controller.

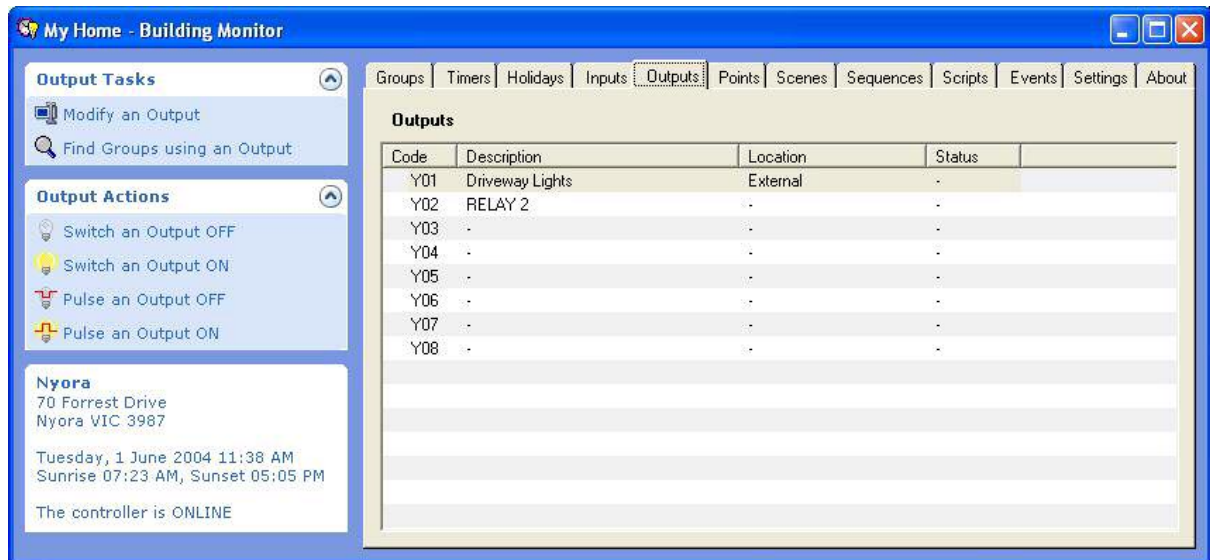


- Select a group from the Groups list.
- Click one of the actions in the Group Actions pane.
A group can be switched or pulsed ON or OFF.

Manually controlling an output

To manually control an output complete the following steps:

- Select the Outputs tab
Building Monitor displays the list of outputs on the controller.

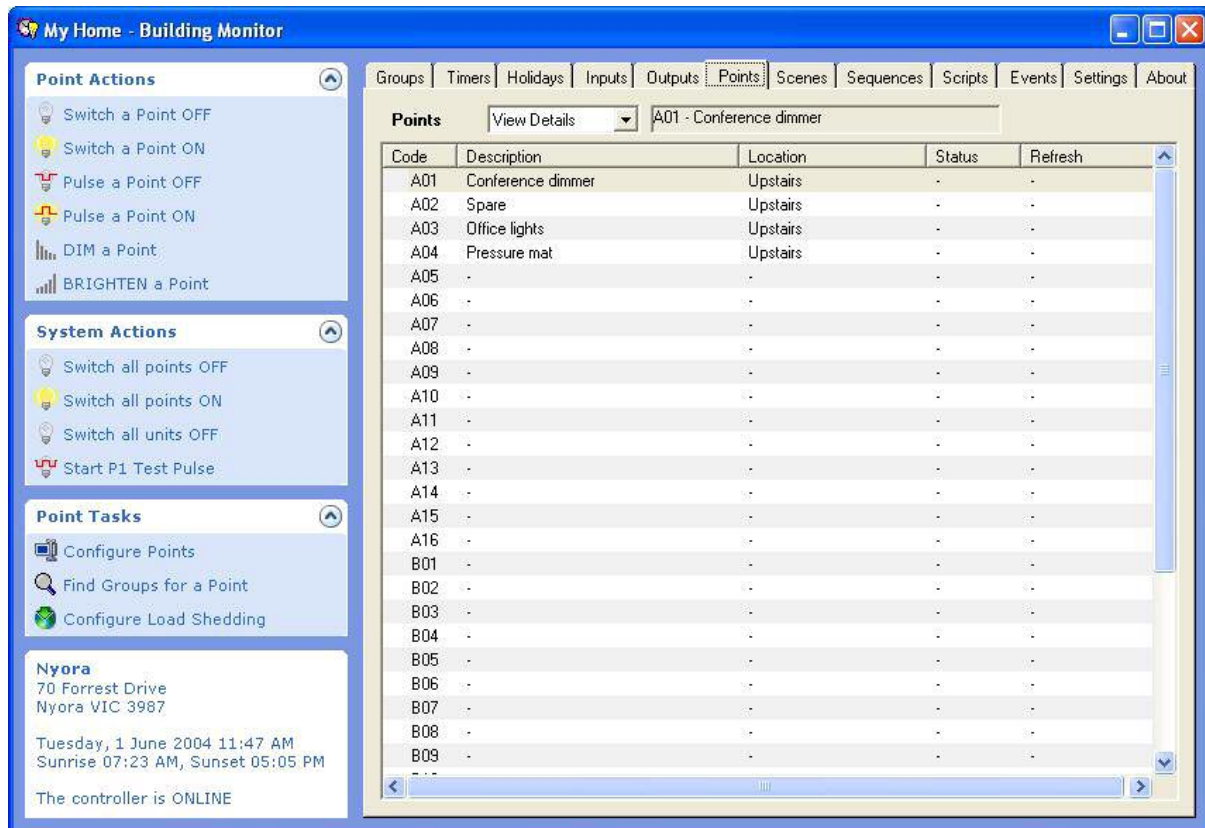


- Select an output from the Outputs list.
- Click one of the actions in the Output Actions pane.
An output can be switched or pulsed ON or OFF.

Manually controlling a field point

To manually control a point complete the following steps:

- Select the Points tab
Building Monitor displays the list of field points configured on the controller.



- Select a point from the Points list.
- Click one of the actions in the Point Actions pane.
A point can be switched or pulsed ON or OFF, dimmed or brightened depending on the field hardware.

Alternative

The controller also supports a number of additional actions as shown in the System Actions task pane. The effect of these actions depends on the configuration of the field hardware.

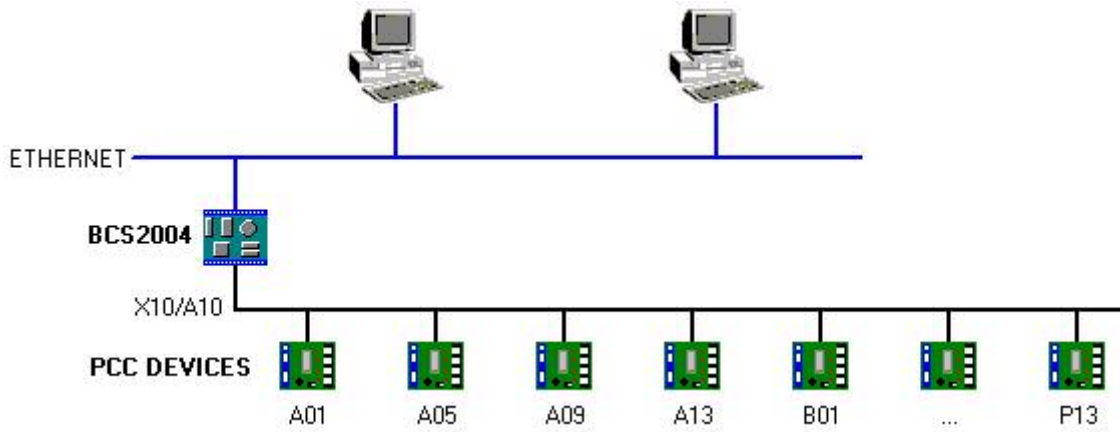


Figure 1: Typical Ethernet control of PCC devices

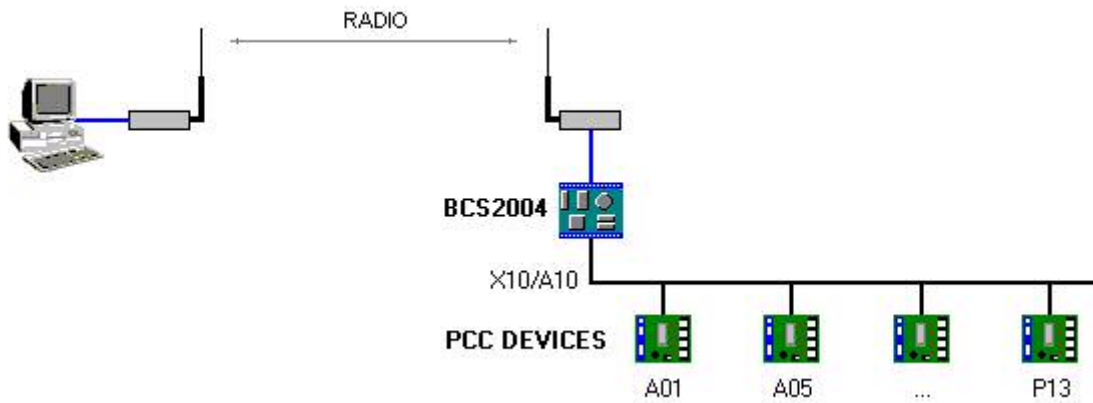


Figure 2: Radio control of PCC devices

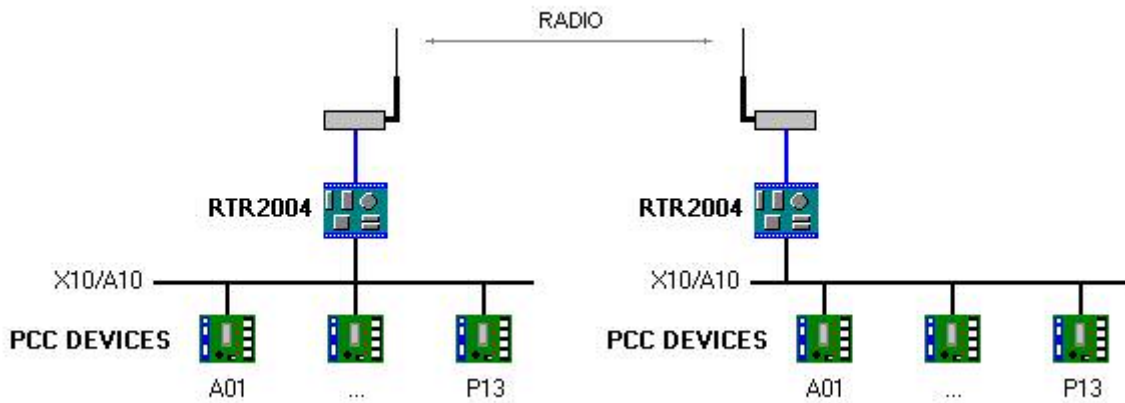


Figure 3: Router and radio system to transmit PCC signals