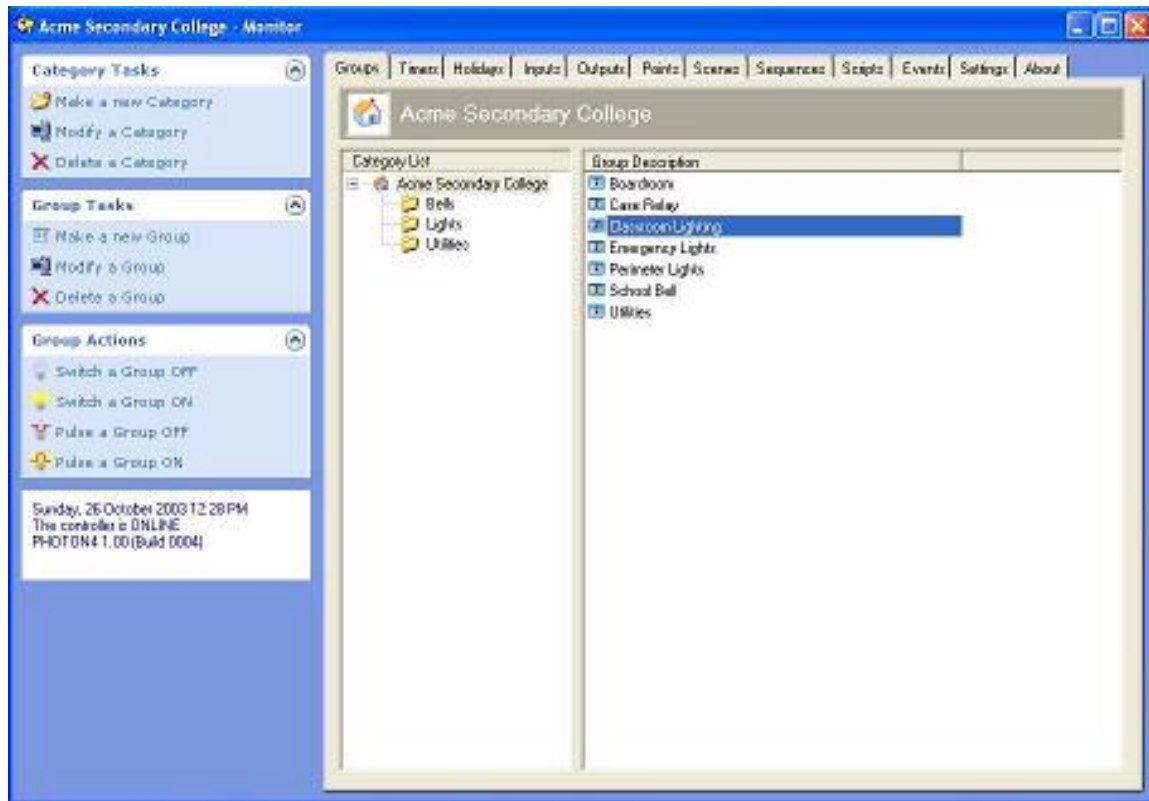


Building Monitor

The Building Monitor application provides the capability to configure, commission, manage and operate a BCS-2004 control system.

The software features an intuitive user interface based on the Windows XP style. Tabsheets provide quick access to the controller data while common tasks are shown in the task panes on the left-hand side of the window.



The Building Monitor application provides an easy-to-use and intuitive interface to configure controllers on your BCS-2004 system.

The application allows you to set up groups, timers, holidays, inputs, outputs, points, scenes, sequences, scripts and system settings.

Scheduled Control

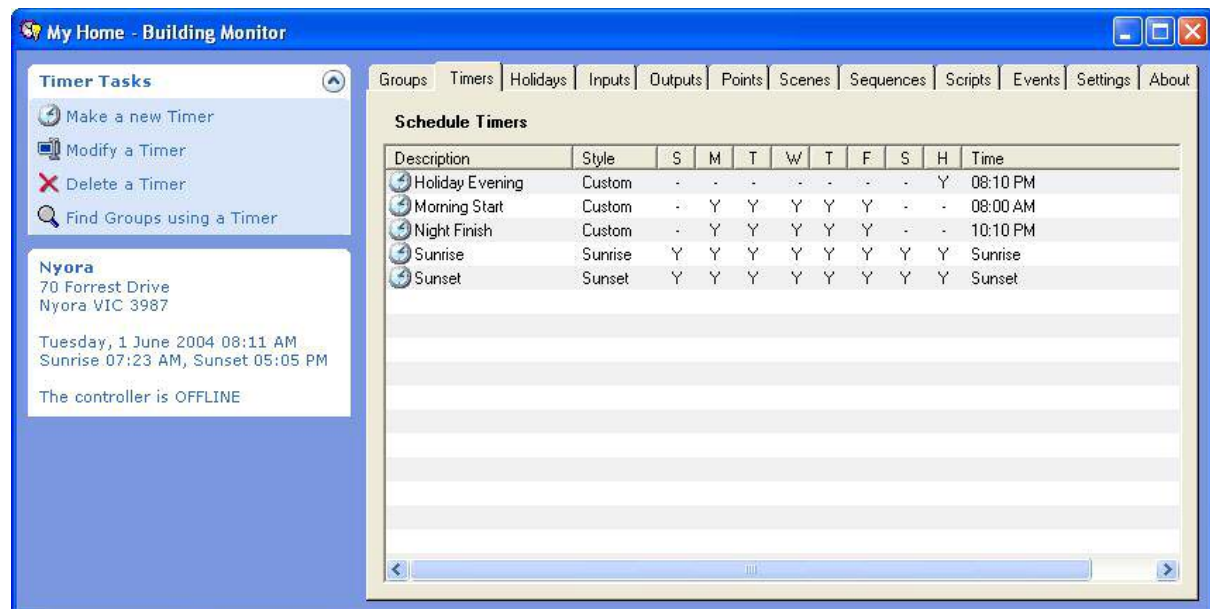
Scheduled control is where an action is programmed to occur sometime in the future. Typical actions include switching on or off lights and heaters, and ringing a school bell.

Scheduled control takes place on a group of outputs and points at a time determined by a schedule timer. Multiple timers can be assigned to a group to cause multiple actions throughout the period of a day or on different days. A single timer can also be assigned to more than one group. For example, the timer may be used to switch one group off and another group on.

Timers

Timers are used to describe when actions on groups are to take place. For example, a timer may be used to switch off one group of lights and switch on another group.

The time that an action takes place is configured by creating a timer. To view the schedule timers, simply click on the Timers tab as shown in the following picture.



Adding a new timer

To add a new timer, complete the following steps:

- Click the *Make a new Timer* option in the Timer Tasks pane.
- Type a name for your timer and click the OK button.
Building Monitor will create a new timer with default settings and add it to the Schedule Timers list.

TIP: Use a name that best describes the time of day or the reason for the timer, for example “Store opening”.

Modifying an existing timer

Once a timer has been created you can modify when it occurs. To modify a timer complete the following steps:

- Select a Timer in the Schedule Timers list.
- Click the *Modify a Timer* option in the Timer Tasks pane.

Building Monitor displays the Timer window.

The screenshot shows a dialog box titled "Store opening - Timer". It has a "General" tab. The fields are: ID: 4, Enabled: , Description: Store opening, Days: S M T W T F S H All, Type: 0: Custom, Time: 09:00:00 AM. At the bottom are buttons for OK, Cancel, and Apply.

- To select the days of the week that the timer is to operate select or deselect each day as represented by the S M T W T F S H check boxes. The H check box determines whether or not the timer will operate on holidays.
- To enter the time of day that the timer is to operate select the type of timer and the time as indicated in the following table:

Type	Parameters
Custom	The time of day
Sunrise	Offset from sunrise in minutes
Sunset	Offset from sunset in minutes
Repeat	The period the timer is to operate and the frequency of the actions

- To confirm your selections click the OK or Apply buttons.

Deleting a timer

Once a timer has been created there may be times when you want to delete that timer. To delete a timer complete the following steps:

- Select a Timer in the Schedule Timers list.
- Click the *Delete a Timer* option in the Timer Tasks pane.

Building Monitor deletes the timer from the Schedule Timers list.

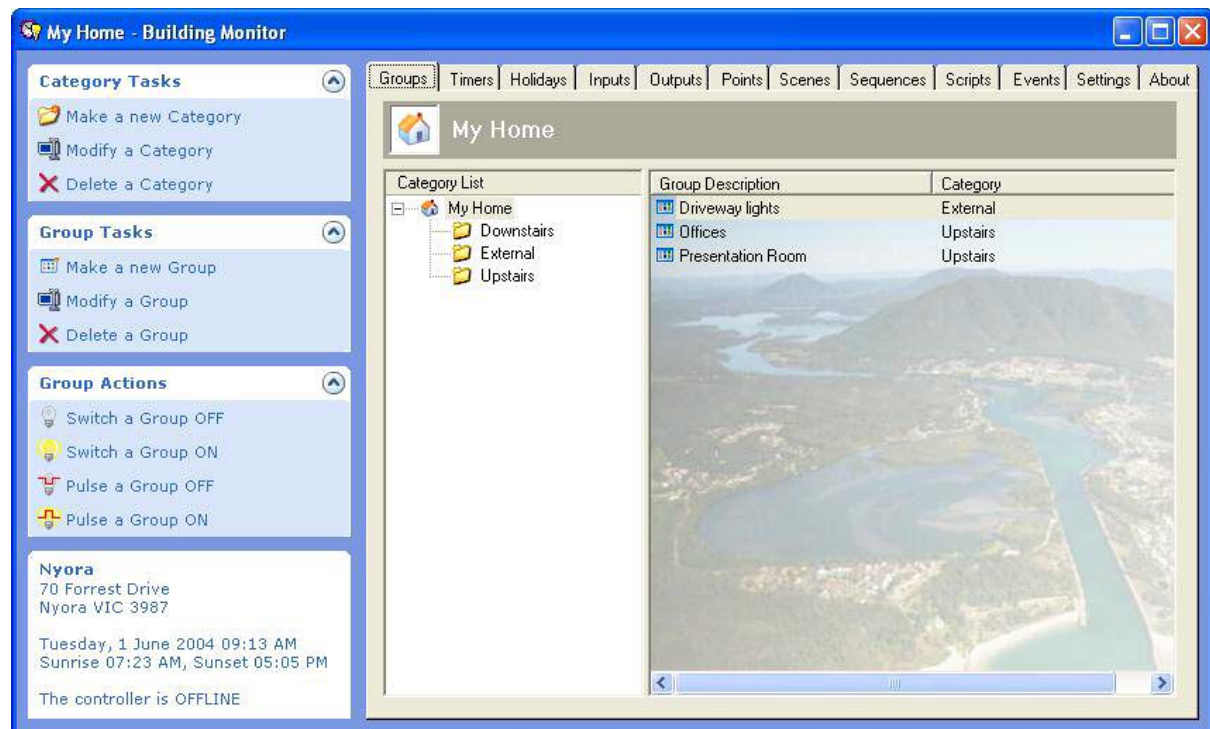
Groups

Building Monitor allows for groups of inputs, outputs and points to be combined to provide a convenient way to control a number of items from one place.

Scheduled control within Building Monitor is carried out on groups.

Groups can also be divided into various categories to provide a hierarchical representation of the installation. For example categories can be used to divide the groups into sections for separate buildings or floors.

To view the groups simply click on the Groups tab as shown in the following picture.



Clicking the top or main category, shown here as “My Home”, displays all the groups configured for the controller.

Adding a new group

To add a new group complete the following steps:

- Select the Category you want the new Group to appear in.
- Click the *Make a new Group* option in the Group Tasks pane.
- Type a name for your group and click the OK button.

Building Monitor will create a new group with default settings and add it to the Groups list.

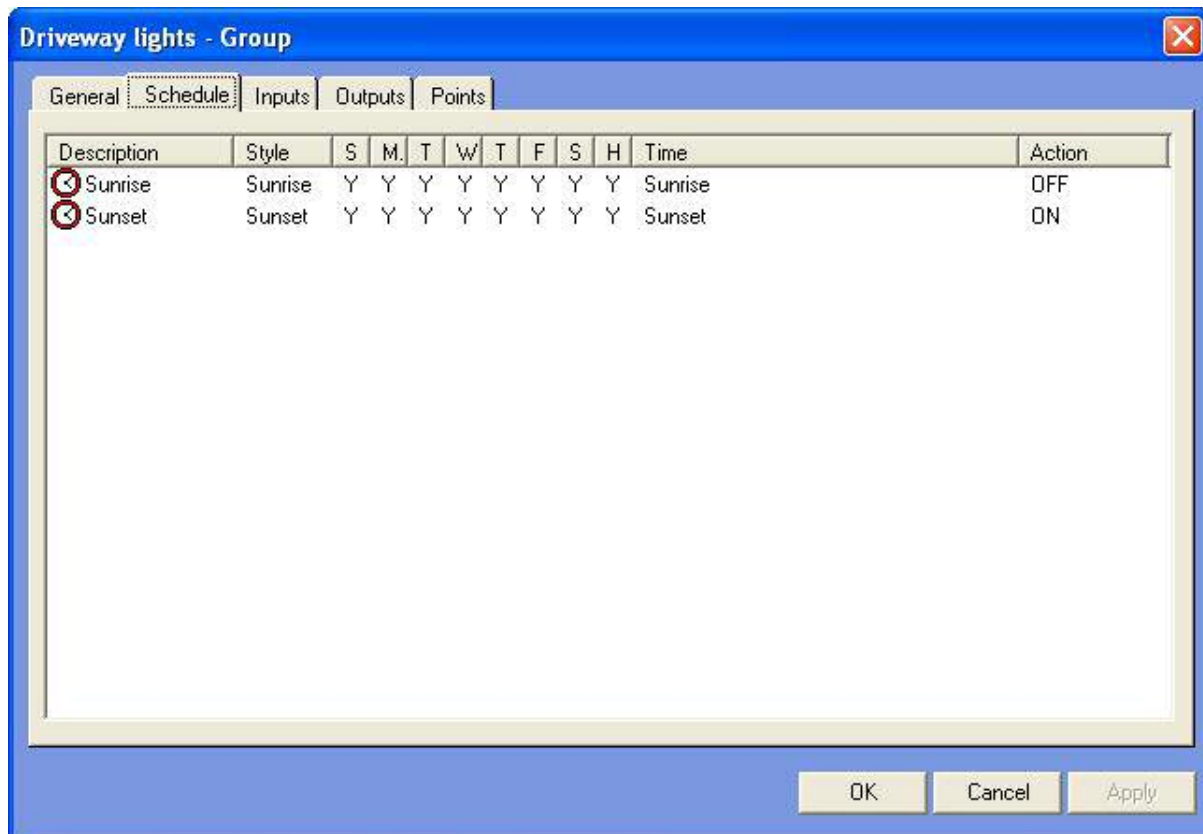
TIP: Use a name that best describes the time of day or the reason for the group, for example “Driveway lights”.

Modifying an existing group

Once a group has been created you can modify the inputs, outputs and points that belong to it and create a schedule for when it is to be controlled. To modify a group complete the following steps:

- Select a Group in the Schedule Groups list.
- Click the *Modify a Group* option in the Group Tasks pane.

Building Monitor displays the Group window.



Creating a control schedule

A control schedule for a group consists of one or more timers and actions. The example window above shows the schedule for the Driveway lights group.

The group uses two timers, Sunrise and Sunset. At Sunset the group will be switched ON and at Sunrise the group will be switched OFF.

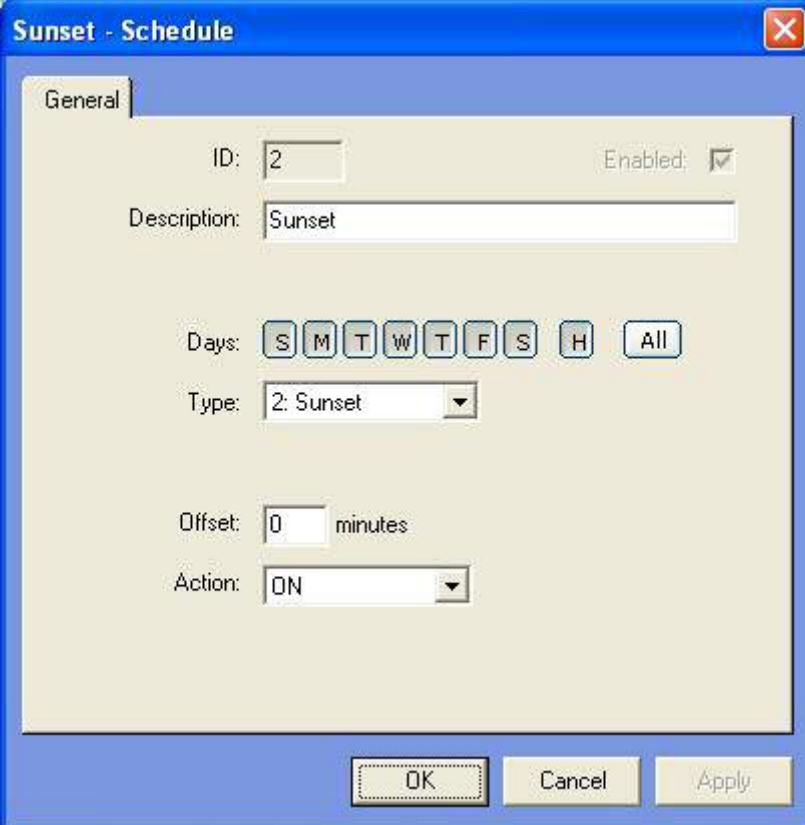
To add a control schedule:

- Move the mouse pointer over the Schedule list and click the right-hand mouse button. Building Monitor displays a pop-up menu.
- Click the Add option in the menu. Building Monitor displays a list of the Schedule Timers you have configured.
- Select a Timer and click the OK button. Building Monitor adds the timer to the schedule with a default action of ON.

Modifying a control schedule

To modify a control schedule:

- Select a schedule item from the Schedule list and click the right-hand mouse button. Building Monitor displays a pop-up menu.
- Click the **Open** option in the menu. Building Monitor displays the schedule window.



The screenshot shows a dialog box titled "Sunset - Schedule". It has a "General" tab. The fields are: ID: 2, Enabled: , Description: Sunset, Days: S M T W T F S H All, Type: 2: Sunset, Offset: 0 minutes, Action: ON. Buttons at the bottom: OK, Cancel, Apply.

- To alter the scheduled action, select a different action from the Action drop down list.
- Click the OK button to confirm your changes. Building Monitor will show the change in the Schedule list.

TIP: You can also open a schedule by double-clicking on a schedule item in the Schedule list.

NOTE: The timer settings can also be altered from the schedule window. Any changes made to the timer will also affect other groups that use the timer.

Deleting a control schedule

To delete a control schedule:

- Select a schedule item from the Schedule list and click the right-hand mouse button. Building Monitor displays a pop-up menu.
- Click the **Delete** option in the menu. Building Monitor deletes the schedule item and removes it from the Schedule list.

NOTE: Deleting a schedule item does not delete the timer so the timer can still be used by other Group schedules.

Deleting a group

Once a group has been created there may be times when you want to delete that group. To delete a group complete the following steps:

- Select a Group in the Groups list.
- Click the *Delete a Group* option in the Group Tasks pane.

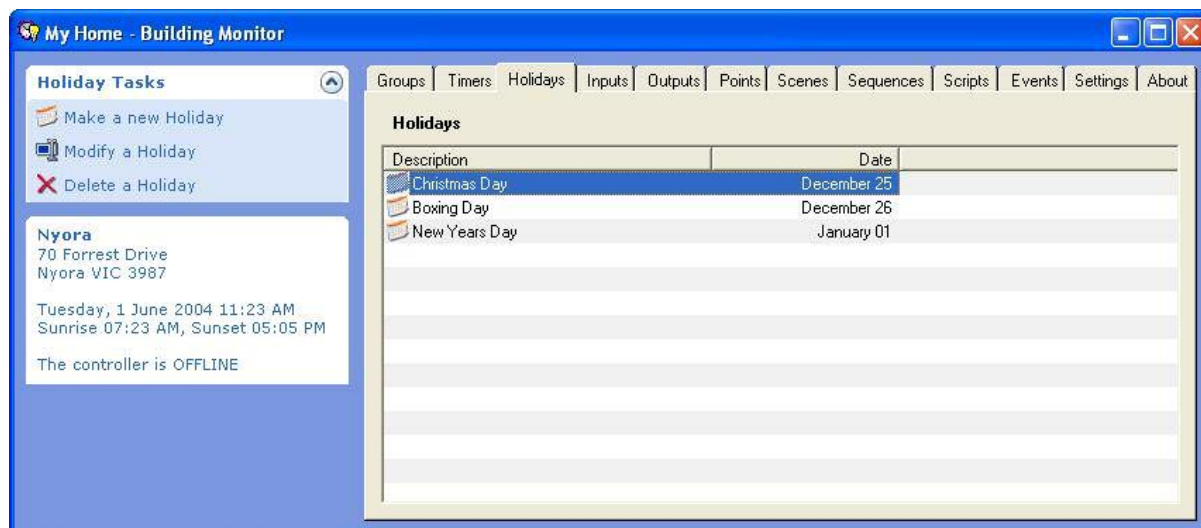
Building Monitor deletes the group from the Groups list.

NOTE: Deleting a group does not delete the inputs, outputs, points or timers that the group uses. Only the control schedule for the group is deleted.

Holidays

In Building Monitor holidays are treated as a special day. For schedule control to occur on a holiday you must specifically include Holidays in the timer. Please refer to the timers section for more information on how to achieve this.

To view the holidays simply click on the Holidays tab as shown in the following picture.



Adding a new holiday

To add a new holiday complete the following steps:

- Click the *Make a new Holiday* option in the Holiday Tasks pane.
- Type a name for your holiday and click the OK button.
Building Monitor will create a new holiday with default settings and add it to the Holidays list.